



Situational Awareness Report

Report ID #: 2017-0223-0008

[Provide Feedback on this Report](#)

Event: Winter Storm - River Flooding (State-Wide)

Report Date: Thursday, February 23, 2017 at 12:08am

Next Report: Friday afternoon / evening

Recipients: All CRA members

Notice: The information in this report is subject to change and the situation may have evolved since the sending of this report.

Summary

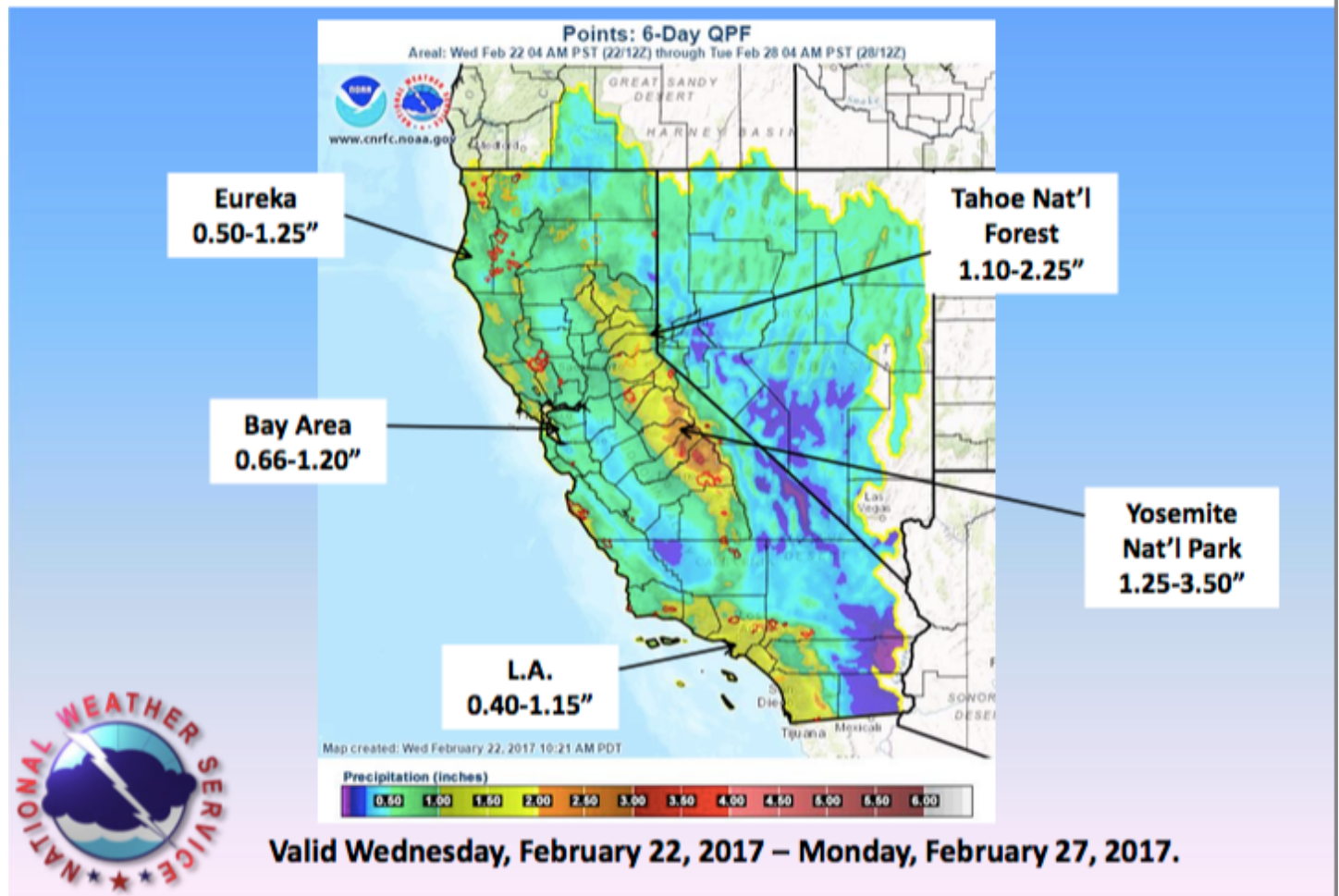
- 6 Day precipitation forecast totals have been lowered since yesterday
- No current weather Watches, Warnings and Advisories for California
- Many rivers have dropped below flood monitoring stage.
- Mandatory evacuations are still in place for certain neighborhoods in San Jose.
- The Sacramento River at Ord Ferry is forecast to reach flood stage again Thursday 2/23/17 in the afternoon / evening
- Clearlake is forecast to remain above flood stage into next week. The elevated level of Clear Lake is having a major impact on the City of Lakeport's Sewer Collection System.
- Communication infrastructure destruction affecting the towns of Quincy, Portola, Loyalton, Sierraville and Blairsden.
- Increasing water runoff from Don Pedro Reservoir has the potential to put an increase in pressure upon the levee system for the Tuolumne River

Sharing Information with the CRA

By sharing information we can gain a better overall understanding of the evolving situation. Please consider sharing with the CRA information about what you are seeing at your locations. You can designate your information as not to be shared further, to be shared on a limited need to know basis (e.g. With local EOCs), or okay to share with members and partners; and whether you want it shared anonymously or sourced. Send situational information to Monika Stoeffl, CRA Executive Director at mstoeffl@CAresileincy.org.

Precipitation Forecast

6 Day Precipitation Forecast



6 Day precipitation forecast totals have been lowered since yesterday

Current Weather Conditions and/or Concerns:

Partly sunny with scattered showers throughout **Northern California**. Significant flooding concerns continue as runoff from the recent rain continues to work its way downstream adding stress to waterways. Scattered showers with a chance of few thunderstorms today, then another storm potentially late in the weekend. (Source: CalOES BOC 2017 Winter Storms / Flood Update 2/22/17 at 6:01pm)

Mostly sunny with calm winds throughout **Southern California**. A weak weather system will bring some rain and snow to the mountains today into Thursday along with gusty winds. Otherwise, dry and cool weather can be expected through Friday. Another storm system is possible over the weekend which may persist into early next week. (Source: CalOES BOC 2017 Winter Storms / Flood Update 2/22/17 at 6:01pm)

No current weather Watches, Warnings and Advisories for California (Source: National Weather Service Website 2/22/17 at 9:35pm)

Critical Infrastructure

Power Outage Maps	Los Angeles Department of Water & Power PacifiCorp Pacific Gas & Electric Company Sacramento Municipal Utility SanDiego Gas & Electric Company Southern California Edison Company
Road Closures	<p>There are no Lifeline Route Closures at this time. (Source: CalOES Daily Situation Report 2/22/17)</p> <p>Multiple Non-Lifeline Route Closures are in effect for various counties. (Source: CalOES Daily Situation Report 2/22/17)</p>
Road Closure Maps	CalTrans Quick Map Bay Area 511 LA 511 Inland Empire 511 Sacramento 511 San Diego 511 San Joaquin Valley 511 Santa Cruz 511
Natural Gas Outage	PG&E is currently not reporting any outage (Source: PG&E Gas Outage Map as of 2/22/17 at 8:30pm)
Communication Infrastructure	At 2245 hours on 02/21/17, the battery backup on AT&T's microwave site on Red Hill failed causing the following communities to become isolated: Quincy, Portola, Loyalton, Sierraville and Blairsden. Citizens can call locally within their central office, but cannot make calls outside their switch nor can they call 911. Both wired and wireless calls are affected. Unknown time of restoration. (Source: CalOES Daily Situation Report 2/22/17)

Butte County

Road Closures	<p>Road Closure List for County: https://www.buttecounty.net/publicworks/RoadClosures.aspx</p> <p>Check Road Closure Map Links in Critical Infrastructure section for current road closures</p>
---------------	---

Butte County (continued)

Reservoir Oroville Dam	<p>As of 1100 hours on 02/22/17, the elevation of the reservoir is 852.72 (48.28 feet below the spillway) and is releasing around 59,841 cfs. (Source: CalOES BOC 2017 Winter Storms / Flood Update 2/22/17 at 6:01pm)</p> <p>Dept Water Resources Oroville Spillway Incident Page: http://www.water.ca.gov/oroville-spillway/index.cfm</p>
Evacuations	<p>Advisory evacuations still in effect. (Source: CalOES BOC 2017 Winter Storms / Flood Update 2/22/17 at 6:01pm)</p>
Shelters	<p>Silver Dollar Fairground, 2357 Fair St, Chico Enterprise Rancheria Reservation, 1100 Lumpkin Road Oroville Neighborhood Church of Chico: 2801 Notre Dame Blvd, Chico Oroville Church of the Nazarene: 2238 Monte Vista Ave, Oroville (Source: CalOES Daily Situation Report 2/22/17)</p>
Sandbag Information	<p>https://www.buttecounty.net/oem/DisasterPreparedness/SandbagLocations.aspx</p>
County Alert Registration Page	<p>https://buttecounty.onthealert.com</p>

Colusa County

Road Closures	<p>Colusa County Road Closure Website: http://www.countyofcolusa.org/index.aspx?nid=151</p> <p>Check Road Closure Map Links in Critical Infrastructure section for current road closures</p>
Rivers & Creeks	<p>Sacramento River at Moulton Weir Expected to meet or exceed flood monitoring stage. (Source: CalOES Daily Situation Report 2/22/17) River Data from California Nevada River Forecast Center</p> <p>Sacramento River at Colusa Weir Expected to meet or exceed flood monitoring stage. (Source: CalOES Daily Situation Report 2/22/17) River Data from California Nevada River Forecast Center</p> <p>Sacramento River at Colusa Bridge Expected to meet or exceed flood monitoring stage. (Source: CalOES Daily Situation Report 2/22/17) River Data from California Nevada River Forecast Center</p>

El Dorado County

Road Closures

Hwy 50 at Bridal Veil Falls -Traffic reduced to 1 lane eastbound and 1 lane westbound using EB lanes due to slip out on both westbound lanes, starting from 3 miles east of Pollock Pines to 1 mile west of Riverton/ at Bridal Veil Road. (Source: CalOES BOC 2017 Winter Storms / Flood Update 2/22/17 at 6:01pm)

Check Road Closure Map Links in Critical Infrastructure section for current road closures

Rivers & Creeks

Klamath River at Klamath

Dropped below flood monitoring stage on Wednesday 2/22/17. (Source: [California Nevada River Forecast Center](#) 2/22/17 at 11:25pm)

Glenn County

Road Closures

Glenn County Road Closures Website:

<http://www.countyofglenn.net/dept/planning-public-works/road-bridge-maintenance/road-conditions>

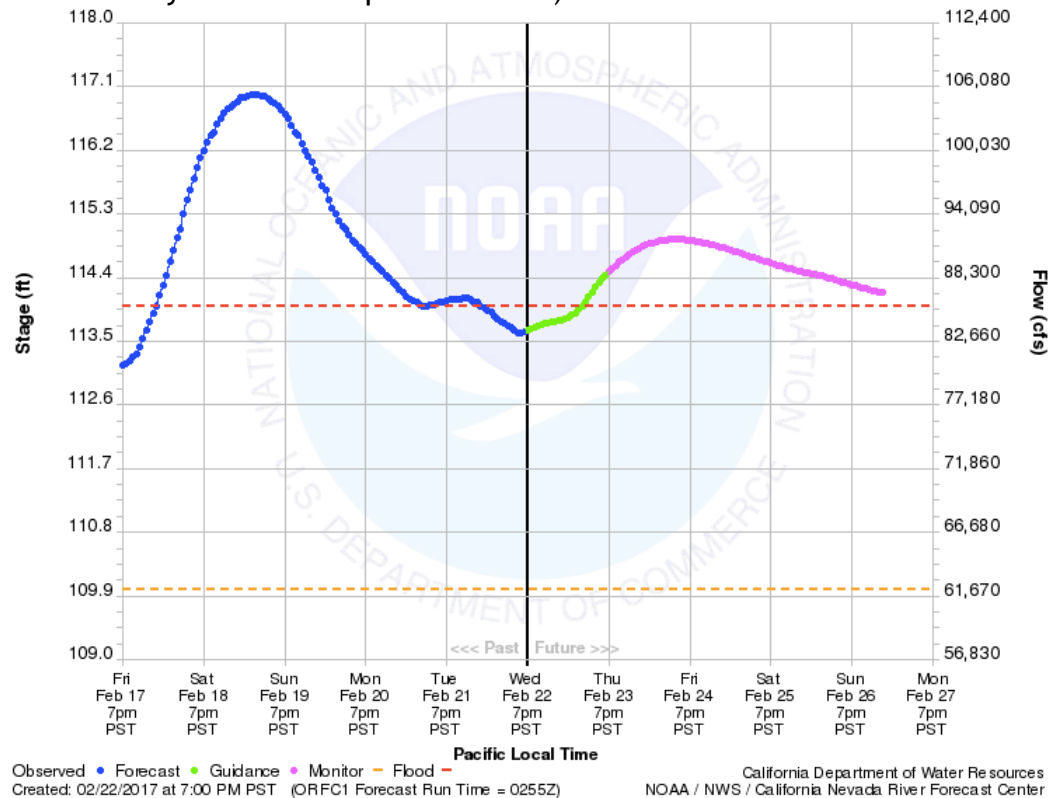
Check Road Closure Map Links in Critical Infrastructure section for current road closures

Glenn County (continued)

Rivers & Creeks

Sacramento River at Ord Ferry

Forecast to be above flood stage at 114.0 feet the morning of 02/22/17. Potential Impacts: Designated flood stage. Design overflow level for M&T, 3BS and Goose Lake Flood Control facilities to divert flood flows into Butte Basin. M&T overflows closing River Road from Ord Ferry Road to Chico River Road. Ord Ferry Road is already closed. (Source: CalOES Daily Situation Report 2/22/17)



(Image Source: [California Nevada River Forecast Center River Data](#))

Sacramento River at Hamilton City

Expected to meet or exceed flood monitoring stage. (Source: CalOES Daily Situation Report 2/22/17)

[River Data from California Nevada River Forecast Center](#)

Sacramento River at Butte City

Expected to meet or exceed flood monitoring stage. (Source: CalOES Daily Situation Report 2/22/17)

[River Data from California Nevada River Forecast Center](#)

Social Media Links

[Glenn County OES Twitter](#)

Humboldt County

Road Closures	<p>Humboldt County Road Closure Website: http://www.humboldtgov.org/1422/Road-Conditions</p> <p>Check Road Closure Map Links in Critical Infrastructure section for current road closures</p>
Rivers & Creeks	<p>Eel River at Fernbridge Dropped below monitoring stage on Wednesday 2/22/17. (Source: California Nevada River Forecast Center 2/22/17 at 10:00pm)</p>
Social Media Links	<p>Humboldt County OES Twitter</p> <p>Humboldt County OES Facebook</p>

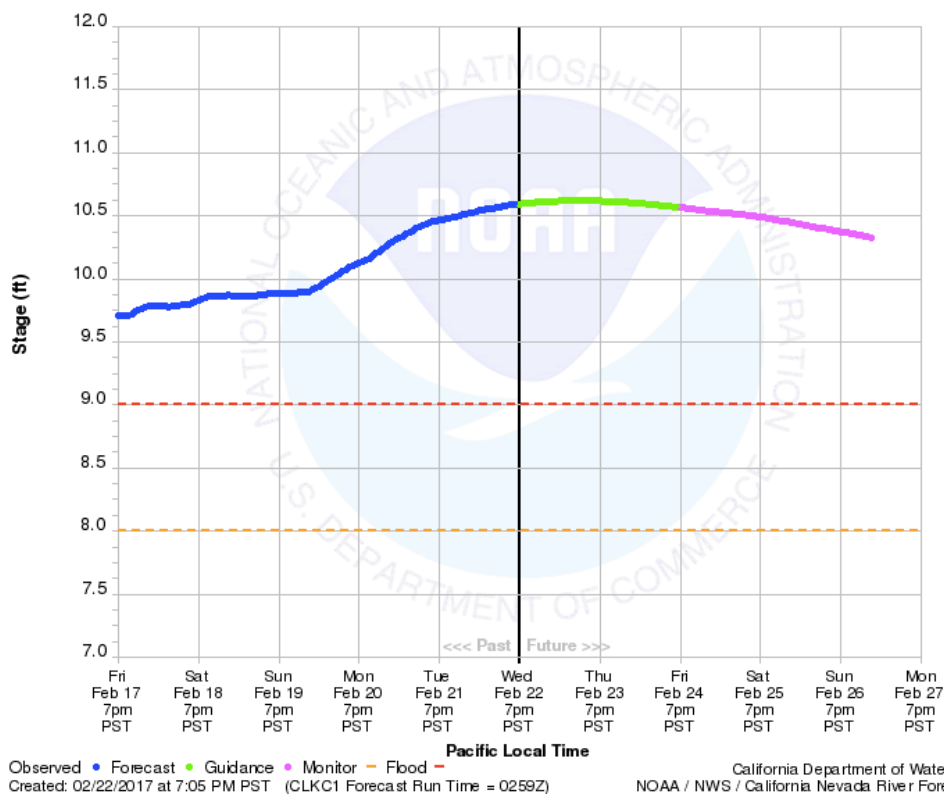
Lake County

Road Closures	<p>Lake County Road Closures List: http://www.co.lake.ca.us/Assets/PublicWorks/Docs/Road%20Conditions.pdf?method=1</p> <p>Check Road Closure Map Links in Critical Infrastructure section for current road closures</p>
Critical Infrastructure: Sewer	<p>The elevated level of Clear Lake is having a major impact on the City of Lakeport's Sewer Collection System. The high water levels have drastically increased intrusion entering the Collection System as water finds its way into our pipes via clean-outs, manholes and cracked or broken pipes. (Source: CalOES BOC 2017 Winter Storms / Flood Update 2/22/17 at 6:01pm)</p>

Lake County (continued)

Rivers & Creeks

Clearlake at Lakeport



(Image Source: [California Nevada River Forecast Center River Data](#))

Shelters

Lakeport Community 7th Day Adventist Church: 1111 Park Way, Lakeport
(Source: CalOES Daily Situation Report 2/22/17)

Evacuations

Advisory evacuations are in place for residents in Clear Lake Oaks, Clear Lake Oaks Keys, Big Valley Rancheria, Land's End, Corinthian Bay, Soda Bay and other nearby areas. There is flooding around Clear Lake and it is expected that the floodwaters will take about eight days to recede to flood stage. Residents are being directed to the shelter at the Seventh Day Adventist Church in Lakeport. (Source: CalOES BOC 2017 Winter Storms / Flood Update 2/22/17 at 6:01pm)

Social Media Links

[Lake County OES Twitter](#)

[City of Lakeport Facebook](#)

Additional Resources

[City of Clearlake 2017 Flood Event - Updates & General Information](#)

Lassen County

Road Closures	Check Road Closure Map Links in Critical Infrastructure section for current road closures
Rivers & Creeks	Pit River at Canby Forecast to reach 9 feet late tonight/early Wednesday with moderate flooding in southwest Modoc and northwest Lassen counties. (Source: CalOES Daily Situation Report 2/22/17) River Data from California Nevada River Forecast Center

Mendocino County

Road Closures	Mendocino County Road Closures Website: https://www.co.mendocino.ca.us/dot/roadClosures.htm SR-1 remains closed in both directions from 1.2 miles north of Point Arena at Lighthouse Road to 2.2 miles north of Point Arena. (Source: CalOES BOC 2017 Winter Storms / Flood Update 2/22/17 at 6:01pm) Check Road Closure Map Links in Critical Infrastructure section for current road closures
Rivers & Creeks	Navarro River at Navarro Dropped below flood stage, is still above monitoring stage. (Source: California Nevada River Forecast Center 2/22/17 at 11:30pm)
Social Media Links	Mendocino County Dept of Transportation Facebook

Merced County

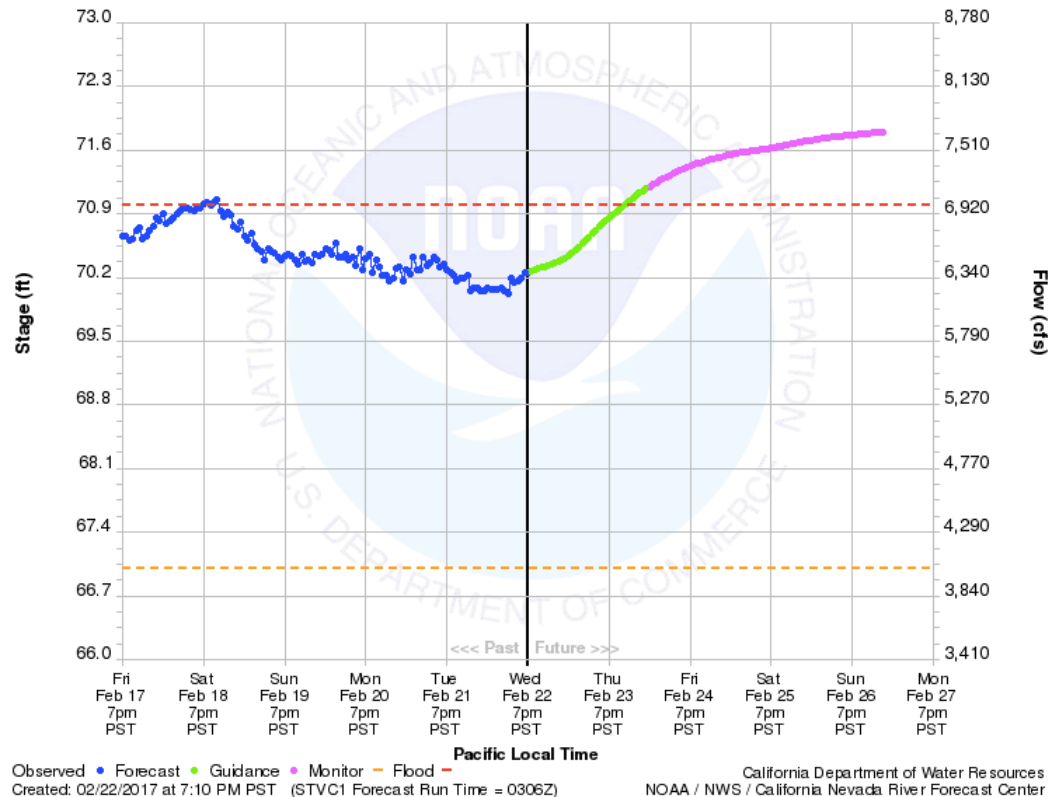
Road Closures	Merced County Road Closures Website: http://www.countyofmerced.com/index.aspx?NID=801 Check Road Closure Map Links in Critical Infrastructure section for current road closures
---------------	--

Merced County (continued)

Rivers & Creeks

Merced River at Stevinson

Forecast to reach flood stage Thursday (2/23/17) evening and continue to crest over the weekend. (Source: [California Nevada River Forecast Center 2/22/17 at 10:00pm](#))



(Image Source: [California Nevada River Forecast Center River Data](#))

San Joaquin River at Newman

Expected to meet or exceed flood monitoring stage. (Source: CalOES Daily Situation Report 2/22/17)

[River Data from California Nevada River Forecast Center](#)

Sandbag Locations

<http://www.co.merced.ca.us/DocumentCenter/Home/View/2680>

Modoc County

Road Closures

Check Road Closure Map Links in Critical Infrastructure section for current road closures

Rivers & Creeks

Pit River at Canby

Forecast to be above flood stage at 9.0 feet the evening of 02/21/17. Potential Impacts: Minor flooding in Canby and Lookout in southwest Modoc county, as well as Beiber and Nubeiber in northwest Lassen county. (Source: CalOES Daily Situation Report 2/22/17)

[River Data from California Nevada River Forecast Center](#)

Monterey County

Road Closures

Monterey County Road Closures Website:

<http://www.co.monterey.ca.us/government/departments-i-z/resource-management-agency/public-works/road-conditions-closures>

As of 2000 hours on 02/11/17, the Pfeiffer Bridge on HWY 1 is closed due to a crack in the bridge. It remains closed to all foot and vehicle traffic at mile marker 45.52 (SB Sycamore Canyon and the Bridge). (Source: CalOES BOC 2017 Winter Storms / Flood Update 2/22/17 at 6:01pm)

SR-1 remains closed over a 40 mile long stretch of Hwy 1, from Ragged Point to Pfeiffer Canyon due to mudslide. (Source: CalOES BOC 2017 Winter Storms / Flood Update 2/22/17 at 6:01pm)

Currently, there is local access from Ragged Point to Big Creek. Additionally, the CHP has asked that vendors, delivery vehicles, and contractors be able to provide names and addresses of clients so that traffic officers can ensure that these vehicles should be allowed into locals only access areas. (Source: [Monterey County OES Facebook Page 2/22/17](#))

Highway 1 will be open south from Pfeiffer Canyon Bridge to San Luis Obispo, to allow for local access and local resupply. Pending confirmation from Caltrans, it is currently anticipated that access will be provided from 12 PM to 5 PM on Friday, February 24, 2017, and from 7 AM to 5 PM on Saturday, February 25, 2017. Access will then be closed until upcoming weekend weather event passes and Caltrans has opportunity to reevaluate road conditions. (Source: [Monterey County OES Facebook Page 2/22/17](#))

Check Road Closure Map Links in Critical Infrastructure section for current road closures

Monterey County (continued)

Rivers & Creeks	Salinas River at Spreckels Dropped below flood monitoring stage on Wednesday 2/22/17. (Source: California Nevada River Forecast Center 2/22/17 at 11:20pm)
	Salinas River at Bradley Forecast to drop below flood monitoring stage Thursday afternoon / evening 2/23/17. (Source: California Nevada River Forecast Center 2/22/17 at 11:20pm)
Shelters	Northminister Presbyterian: 315 E. Alvin Dr., Salinas (Source: CalOES Daily Situation Report 2/22/17)
	Carmel Middle School: 4380 Carmel Valley Road, Carmel (Source: CalOES Daily Situation Report 2/22/17)
Evacuations	As of 1832 hours on 2/20/17, mandatory evacuation of from Highway 1 East to Los Padres Dam and all areas adjacent to Carmel Creek. About 750 people affected. No unmet needs, no need for mutual aid. (Source: CalOES BOC 2017 Winter Storm / Dam Update @ 6:06pm 2/21/17)
Sandbag Locations	Sandbags: http://www.co.monterey.ca.us/home/showdocument?id=14082
	Sand: http://www.co.monterey.ca.us/home/showdocument?id=14083
Social Media Links	Monterey County OES Facebook

Nevada County

Road Closures	Check Road Closure Map Links in Critical Infrastructure section for current road closures
Evacuations	Mandatory evacuations have been lifted. (Source: CalOES BOC 2017 Winter Storms / Flood Update 2/22/17 at 6:01pm)
Shelters	Nevada City - First Baptist Church, 1866 Ridge Road (Stand By) (Source: CalOES Daily Situation Report 2/22/17)

Placer County

Road Closures Interstate 80 has reopened to westbound and eastbound traffic as of 2345 on 2/21/17. (Source: CalOES BOC 2017 Winter Storms / Flood Update 2/22/17 at 6:01pm)

Check Road Closure Map Links in Critical Infrastructure section for current road closures

Rivers & Creeks **Bear River at Wheatland**
Expected to meet or exceed flood monitoring stage. (Source: CalOES Daily Situation Report 2/22/17)

Plumas County

Road Closures Check Road Closure Map Links in Critical Infrastructure section for current road closures

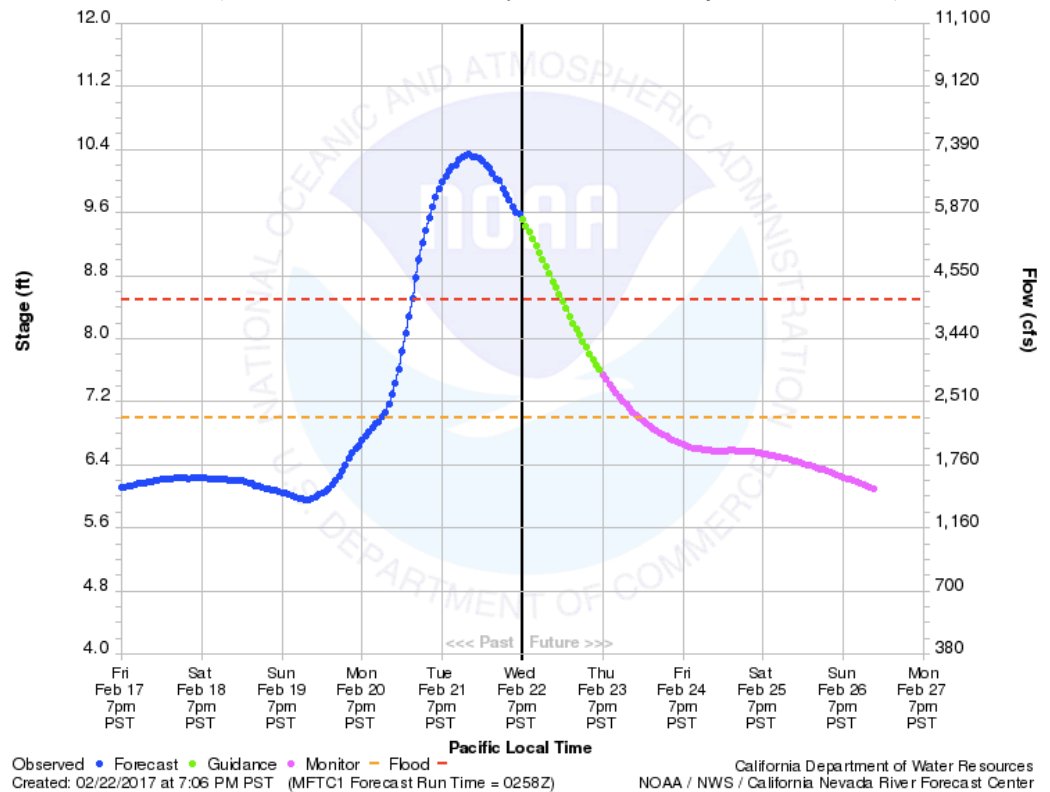
Communication Infrastructure At 2245 hours on 02/21/17, the battery backup on AT&T's microwave site on Red Hill failed causing the following communities to become isolated: Quincy, Portola, Loyalton, Sierraville and Blairsden. Citizens can call locally within their central office, but cannot make calls outside their switch nor can they call 911. Both wired and wireless calls are affected. Unknown time of restoration. (Source: CalOES Daily Situation Report 2/22/17)

Plumas County (continued)

Rivers & Creeks

Middle Fork Feather River at Portola

Middle Fork Feather River at Portola is forecast to be above flood stage at 10.2 feet the morning of 02/22/17. Potential Impacts: Moderate flooding of lowlands, structures and roads from Beckwourth to Sloat California, including Portola. Sleepy Pines Motel and other low structures along river in Portola flood. Evacuation of homes on south end of West Street likely to begin. Sewage ponds in Portola may exceed capacity and may need to release to river. River near foundation of Veterans Hall in Portola. CA Hwy 89 near Clio flooded. Approximately 6450 cfs. Like flood of 3/27/1971. (Source: CalOES Daily Situation Report 2/22/17)



(Image Source: [California Nevada River Forecast Center River Data](#))

Sacramento County

Road Closures

Sacramento County Road Closures Website:

<http://www.sacdot.com/closures/Pages/default.aspx>

Check Road Closure Map Links in Critical Infrastructure section for current road closures

Sacramento County (continued)

Rivers & Creeks

Mokelumne River at Benson's Ferry

The water levels are below flood stage and continuing to drop. By Sunday 2/25/17 evening the water is forecast to be below monitoring stage. (Source: [California Nevada River Forecast Center 2/22/17 at 10:10pm](#))

Consumes River at Michigan Bar

The water levels are below flood stage and continuing to drop. By Friday 2/24/17 evening the water is forecast to be below monitoring stage. (Source: [California Nevada River Forecast Center 2/22/17 at 10:00pm](#))

Cosumnes River at McConnell

Water level dropping below monitor stage late Wednesday / early Thursday. (Source: [California Nevada River Forecast Center 2/22/17 at 10:50pm](#))

Shelters

Cal Expo, 1600 Exposition Blvd, Sacramento (Source: CalOES Daily Situation Report 2/22/17)

Evacuations

All evacuations have been lifted. (Source: CalOES BOC 2017 Winter Storms / Flood Update 2/22/17 at 6:01pm)

Sandbag Sites

<http://www.apps.saccounty.net/waterresources/Sandbag/>

County Alert Registration Page

<http://www.sacramentoready.org/Pages/Emergency-Alerts-Notification-System.aspx>

Social Media Links

[Sacramento County OES Facebook](#)

Additional Resources

[Sacramento County Rainfall and Stream Level Information System](#)

San Benito County

Road Closures

Check Road Closure Map Links in Critical Infrastructure section for current road closures

Evacuations

As of 1120 hours on 2/20/17, voluntary evacuation notices were delivered to approximately 50 residences in the Pacheco Creek community due to flash flooding. (Source: CalOES BOC 2017 Winter Storm / Dam Update @ 6:06pm 2/21/17) [Eight homes are affected and 20 to 30 additional homes that could be affected.](#) (Source: CalOES BOC 2017 Winter Storms / Flood Update 2/22/17 at 6:01pm)

Social Media Links

[San Benito County OES Facebook](#)

San Joaquin County

Road Closures

San Joaquin County Road Closures Website:

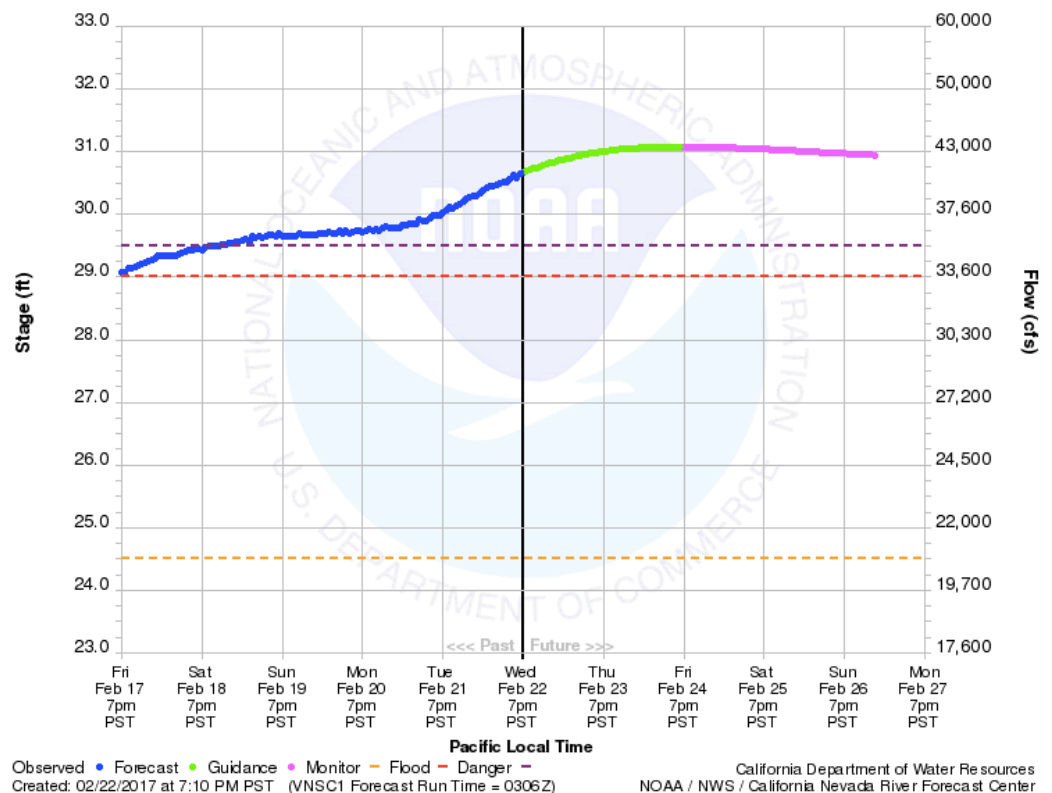
<https://www.sjgov.org/residents/road-closures>

Check Road Closure Map Links in Critical Infrastructure section for current road closures

Rivers & Creeks

San Joaquin River at Vernalis

Currently above danger stage forecast to crest at 30.9 feet the morning of 02/23/17. Potential Impacts: Severe seepage occurs outside the levees. The area covered by seepage will increase as the river stage rises. (Source: CalOES Daily Situation Report 2/22/17)



(Image Source: [California Nevada River Forecast Center River Data](#))

Mormon Slough at Bellota

Below monitor stage (Source: [California Nevada River Forecast Center 2/22/17 at 10:00pm](#))

San Joaquin River at Mossdale

Still cresting through later this week, but not forecast to reach flood stage. (Source: [California Nevada River Forecast Center 2/22/17 at 10:10pm](#))

Levees

Levee breach occurred on the right bank of the San Joaquin River on RD 2075 at 1600 hours 2/20/2017 at 1911 E Parin, Manteca. [Estimated completion date for repairs is 2/22/17](#) (Source: CalOES Daily Situation Report 2/22/17)

San Joaquin County (continued)

Shelters	Lathrop Community Center, 15557 5 th St, Lathrop (Source: CalOES Daily Situation Report 2/22/17)
Evacuations	<p>As of 2030 hours on 2/20/17, evacuating area south of Woodward Ave, west of Union Road, and north of Mortenson. (Source: CalOES BOC 2017 Winter Storm / Dam Update @ 6:06pm 2/21/17) Evacuations still in effect. (Source: CalOES BOC 2017 Winter Storms / Flood Update 2/22/17 at 6:01pm)</p> <p>County Evacuation Maps: http://www.sjmap.org/evacmaps/</p>
Social Media Links	<p>San Joaquin County OES Facebook</p> <p>San Joaquin County OES Twitter</p>

San Mateo County

Road Closures	<p>San Mateo County Road Closure Map: http://www.smcready.org/smc-map-updates</p> <p>Check Road Closure Map Links in Critical Infrastructure section for current road closures</p>
---------------	--

Santa Clara County

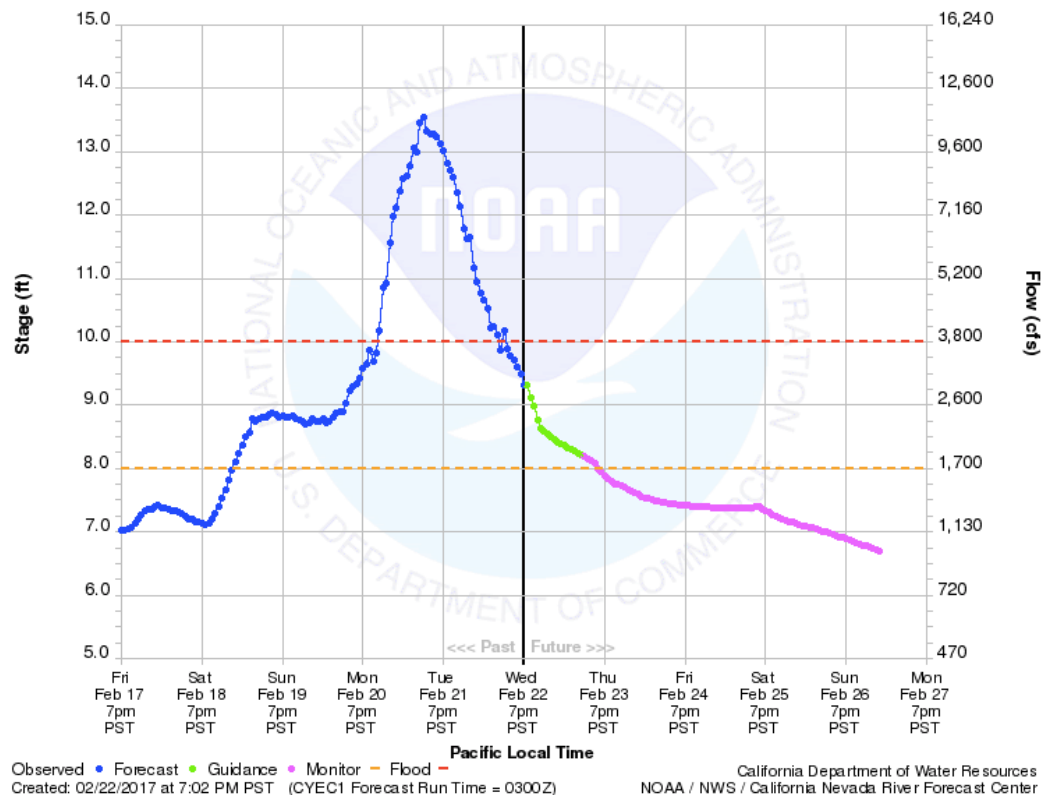
Road Closures	<p>There has also been a left bank levee failure of the Coyote Canal that is flooding Highway 101 north of Morgan Hill. (Source: CalOES BOC 2017 Winter Storms / Flood Update 2/22/17 at 6:01pm)</p> <p>Road Closures on San Jose OES Website (6:40pm 2/22/16)</p> <ul style="list-style-type: none">• Oakland Road (northbound) - Hwy 101 to Commercial St.• Berryessa Rd -- Sierra Rd to Commercial St• Nordale Ave -- Senter Rd to Rock Springs Dr• Welch Ave -- Nordale Ave to Needles Dr• Rock Springs Dr -- Nordale Ave to southern end of Rock Springs Dr• Coyote Ranch Rd (East/West) -- Monterey Rd to Coyote Ranch Rd (North/South)• Coyote Ranch Rd (North/South) -- 200 feet south of PG&E substation entrance to Coyote Ranch Rd (East/West) <p>Check Road Closure Map Links in Critical Infrastructure section for current road closures</p>
---------------	--

Santa Clara County (continued)

Rivers & Creeks

Coyote Creek at Edenvale

Forecast to fall below flood stage Thursday yet remain in monitor stage through Friday. Impacts include minor flooding in homes and businesses at 17th and East San Fernando Streets. (Source: CalOES Atmospheric River Event Weather Threat Briefing 2/22/17)



(Image Source: [California Nevada River Forecast Center River Data](#))

Shelters

James Lick High School 57 North White Rd. San Jose (Source: CalOES Daily Situation Report 2/22/17)

Evergreen Valley High School, 330 Quimby Rd, San Jose (Source: CalOES Daily Situation Report 2/22/17)

Santa Clara County (continued)

Evacuations

As of 0621, the evacuation area is along Coyote Creek, in the Coyote Creek 100 year flood zone plus approximately 250 feet, running from north of 280 to south of 101. The area is approximately 2 miles wide by .5 miles wide. As of 0621, total population in advisory evacuation area is 44,410; 13,777 residents are under mandatory evacuation. The County is assessing a repopulation plan. (Source: CalOES BOC 2017 Winter Storms / Flood Update 2/22/17 at 6:01pm)

[San Jose OES Website](#) Evacuation Update 6:35pm 2/22/17:

Evacuations have been lifted in some neighborhoods.

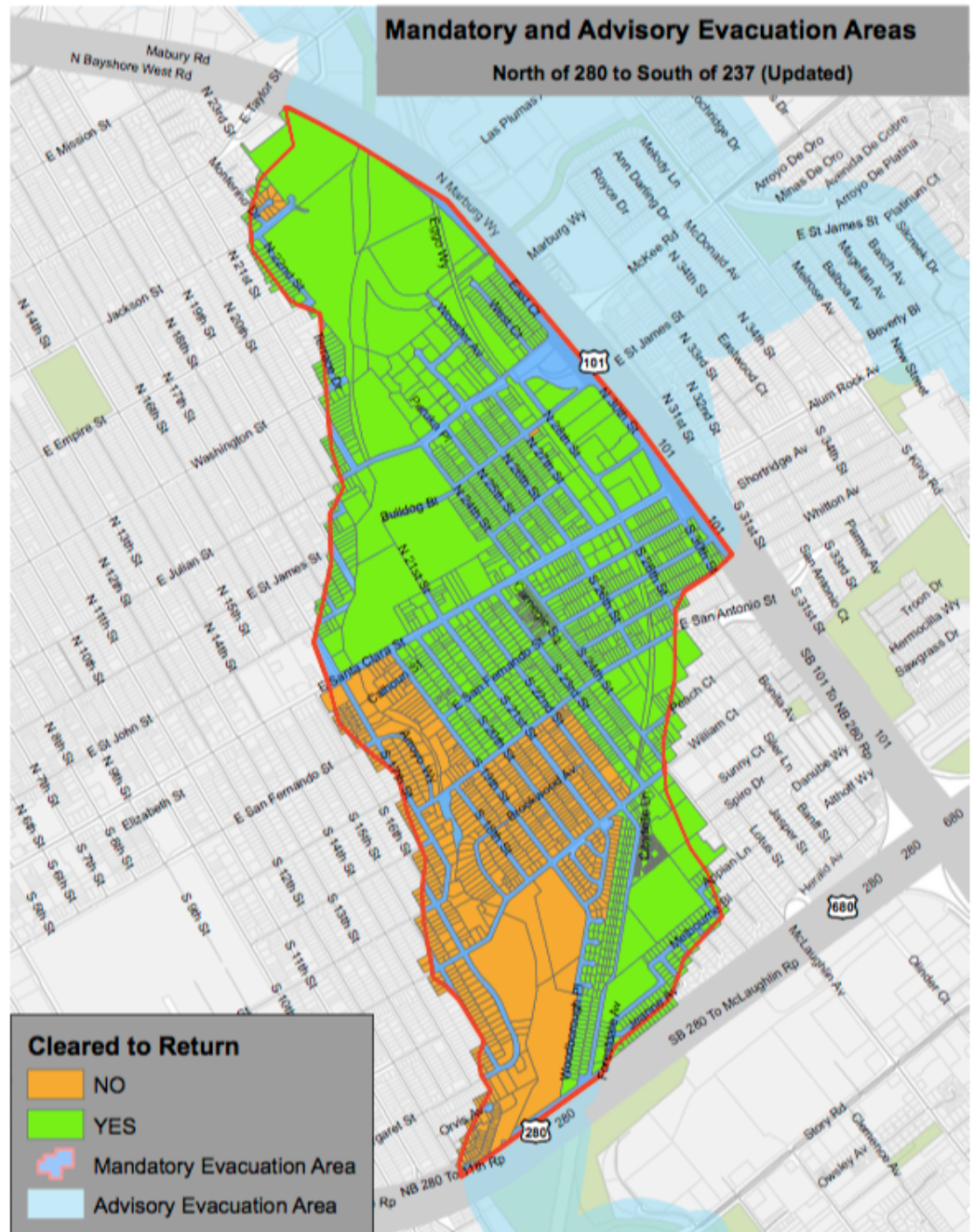
Areas in green are cleared for return. Areas in yellow are still under mandatory evacuation.

- Old Oakland Road Area -- EVACUATIONS STILL IN PLACE: South Bay Mobile Home Park, Golden Wheel Mobile Home Park, and River Bend Mobile Home Park
- Rock Springs Area -- EVACUATIONS STILL IN PLACE
- Naglee Park/Brookwood Terrace/William Street Park -- SOME EVACUATIONS LIFTED (see maps)

Santa Clara County (continued)

Evacuation Maps

Mandatory and Advisory Evacuation Area Map (North of 280 to South of 237)



(Image Source: <http://sanjoseca.gov/DocumentCenter/View/66354>)
Map also available in Spanish and Vietnamese, links on [San Jose OES website](#).

Sandbag Locations

<http://www.valleywater.org/Services/FloodProtectionResources.aspx>

Santa Clara County (continued)

Social Media Links [San Jose Info Twitter](#) (San Jose OES)

[Santa Clara County OES Facebook](#)

Santa Cruz County

Road Closures Santa Cruz County Road Closures Website:
<http://www.sccroadclosure.org/>

SR 129 - Route closed from 4.7 mi east of Watsonville to the Santa Cruz/
San Benito County Line (Source: CalOES BOC 2017 Winter Storm / Dam
Update @ 6:06pm 2/21/17)

Check Road Closure Map Links in Critical Infrastructure section for
current road closures

Rivers & Creeks **Pajaro River at Chittenden**
[Dropping below monitoring stage late Wednesday night / early Thursday
2/23/17. \(Source: \[California Nevada River Forecast Center\]\(#\) 2/22/17 at
11:13pm\)](#)

Sierra County

Road Closures Check Road Closure Map Links in Critical Infrastructure section for
current road closures

Communications
Infrastructure [At 2245 hours on 02/21/17, the battery backup on AT&T's microwave
site on Red Hill failed causing the following communities to become
isolated: Quincy, Portola, Loyalton, Sierraville and Blairsden. Citizens
can call locally within their central office, but cannot make calls outside
their switch nor can they call 911. Both wired and wireless calls are
affected. Unknown time of restoration. \(Source: CalOES Daily Situation
Report 2/22/17\)](#)

Solano County

Road Closures SR-84 is closed in both directions from 7.1 miles south to 6.3 miles south of the Junction of SR220 at Airport Road. (Source: CalOES BOC 2017 Winter Storms / Flood Update 2/22/17 at 6:01pm)

CalTrans website does not list any closures for SR 84 in Solano County (Source: [CalTrans Website](#) 9/22/17 at 9:30pm)

Check Road Closure Map Links in Critical Infrastructure section for current road closures

Rivers & Creeks **Sacramento River at Rio Vista**
Expected to meet or exceed flood monitoring stage. (Source: CalOES Daily Situation Report 2/22/17)
[River Data from California Nevada River Forecast Center](#)

Sonoma County

Road Closures Sonoma County Road Closure Website:
<http://roadconditions.sonoma-county.org>

Check Road Closure Map Links in Critical Infrastructure section for current road closures

Rivers & Creeks **Russian River at Guerneville**
Dropped below food monitoring stage Wednesday 2/22/17. (Source: [California Nevada River Forecast Center](#) 2/22/17 at 11:50pm)

Stanislaus County

Road Closures Check Road Closure Map Links in Critical Infrastructure section for current road closures

Rivers & Creeks **Tuolumne River at Modesto**
Forecast to be above flood stage at 60.2 feet the afternoon of 02/21/17. Potential Impacts: This is channel capacity through downtown Modesto. (Source: CalOES Daily Situation Report 2/22/17)
[River Data from California Nevada River Forecast Center](#)

San Joaquin River at Patterson
Expected to meet or exceed flood monitoring stage. (Source: CalOES Daily Situation Report 2/22/17)
[River Data from California Nevada River Forecast Center](#)

Stanislaus County (continued)

Levees	Increasing water runoff from Don Pedro Reservoir has the potential to put an increase in pressure upon the levee system for the Tuolumne River that has already been weakened by the previous storms. (Source: CalOES BOC 2017 Winter Storms / Flood Update 2/22/17 at 6:01pm)
Shelters	Stanislaus County Fairgrounds, 900 N. Broadway Avenue, Turlock (Source: CalOES Daily Situation Report 2/22/17)
Shelters	Stanislaus County Fairgrounds, 900 N. Broadway Avenue, Turlock (Source: CalOES Daily Situation Report 2/22/17)
Evacuations	As of 0955 hours on 2/20/17 advisory evacuation notices were issued to 978 residences due to the anticipated Don Pedro Dam spillway opening and subsequent de-energizing of electrical power. (Source: CalOES BOC 2017 Winter Storm / Dam Update @ 6:06pm 2/21/17) Advisory evacuations notices till in effect. (Source: CalOES BOC 2017 Winter Storms / Flood Update 2/22/17 at 6:01pm)
Social Media Linka	Stanislaus County Sheriff's Office Facebook

Sutter County

Road Closures	<p>Sutter County Road Closures Website: https://www.suttercounty.org/doc/apps/road_closures</p> <p>Check Road Closure Map Links in Critical Infrastructure section for current road closures</p>
Rivers & Creeks	<p>Sacramento River at Tisdale Weir Expected to meet or exceed flood monitoring stage. (Source: CalOES Daily Situation Report 2/22/17) River Data from California Nevada River Forecast Center</p> <p>Feather River at Nicolaus Expected to meet or exceed flood monitoring stage. (Source: CalOES Daily Situation Report 2/22/17) River Data from California Nevada River Forecast Center</p> <p>Sacramento River at Fremont Weir Expected to meet or exceed flood monitoring stage. (Source: CalOES Daily Situation Report 2/22/17) River Data from California Nevada River Forecast Center</p>

Sutter County (continued)

Evacuations	All evacuation orders are lifted for Yuba City, Live Oak, Marysville, Wheatland, Yuba County, and all portions of Sutter County except for the Meridian and Robbins basins, effective at 6 p.m. on Tuesday, February 21, 2017. (Source: Sutter County Website)
Additional References	County River, Reservoir, and Levee Update (2/21/17)
Social Media Links	Sutter County OES Facebook

Tehama County

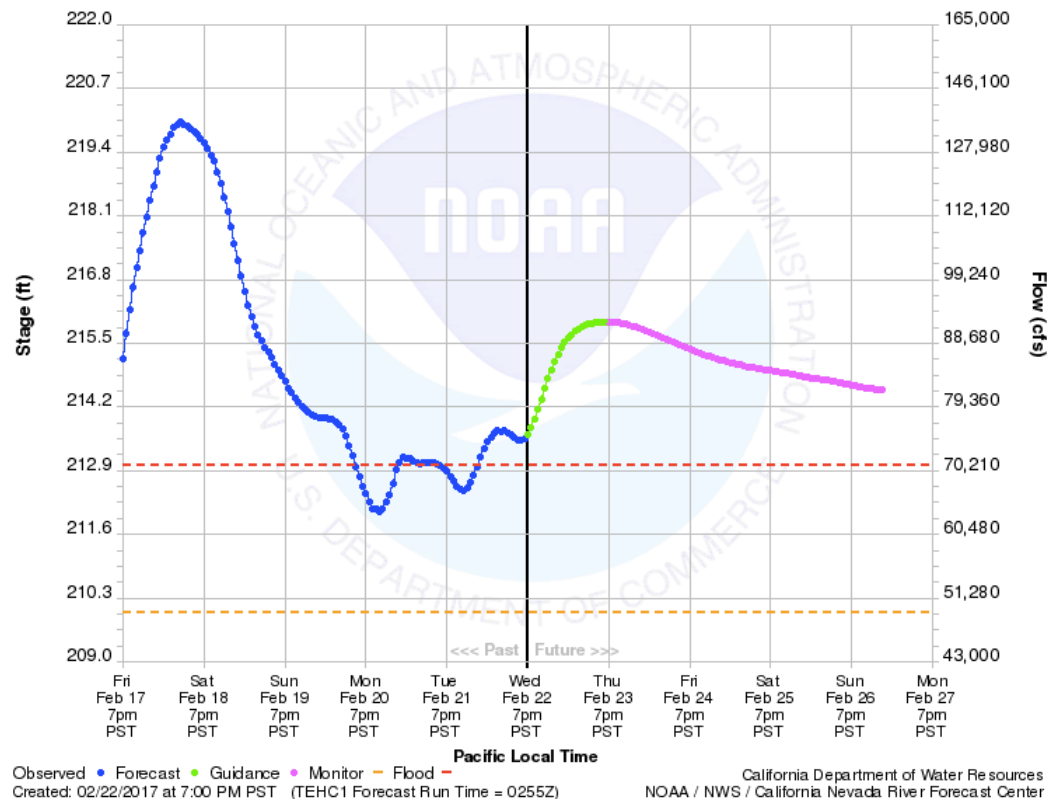
Road Closures	Check Road Closure Map Links in Critical Infrastructure section for current road closures
Rivers & Creeks	<p>Sacramento River at Vina Woodsen Bridge Expected to meet or exceed flood monitoring stage. (Source: CalOES Daily Situation Report 2/22/17) River Data from California Nevada River Forecast Center</p> <p>Sacramento River at Red Bluff Expected to meet or exceed flood monitoring stage. (Source: CalOES Daily Situation Report 2/22/17) River Data from California Nevada River Forecast Center</p>

Tehama County (continued)

Rivers & Creeks

Sacramento River at Tehama Bridge

Forecast to be above flood stage at 213.1 feet the afternoon of 02/21/17. Potential Impacts: Flood Stage - Road inside trailer park and turn around site under railroad tracks (Tehama Vina Road) become impassable. Water is into area around structures on east side of river. No structural damage. Sheriff's Department issues advisory and makes sure Pelhams Bay, Snug Harbor, Ditters River Inn (small trailer park all in a row on east side of river north of bridge) know of advisory. (Source: CalOES Daily Situation Report 2/22/17)



(Image Source: [California Nevada River Forecast Center River Data](#))

Shelters

Los Molinos High School, 7900 Sherwood Blvd., Los Molinos (Source: CalOES Daily Situation Report 2/22/17)

Tuolumne County

Road Closures

Check Road Closure Map Links in Critical Infrastructure section for current road closures

Reservoir - Don Pedro

Bond Flat Road is now closed. Due to substantial changes in weather, the Turlock Irrigation District (TID) closed Bonds Flat Rd between La Grange Rd and Highway 132. (Source: CalOES Daily Situation Report 2/22/17)

Electricity will be shut off at the rate of 8 hours ahead of the water coming down the Tuolumne River. (Source: CalOES Daily Situation Report 2/22/17)

Ventura County

Road Closures

SR33, District 7, is closed from Wheeler Campgrounds to the Lockwood/Ozena Ranger Station due to mudslides. (Source: CalOES BOC 2017 Winter Storm / Dam Update @ 6:06pm 2/21/17) [Local residence with proper identification will be allowed access \(Source: CalTrans Website 2/22/17 9:22pm\)](#)

Check Road Closure Map Links in Critical Infrastructure section for current road closures

Yolo County

Road Closures

Yolo County Road Closures Website:
<http://www.yolocounty.org/community-services/public-works-division/road-closures>

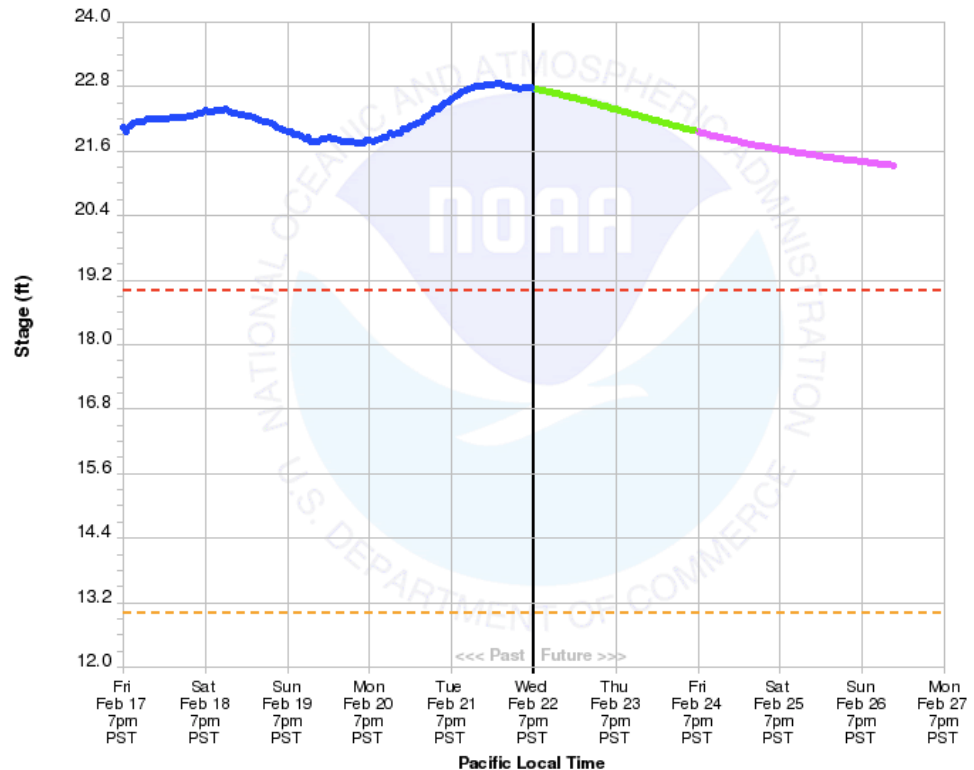
Check Road Closure Map Links in Critical Infrastructure section for current road closures

Yolo County (continued)

Rivers & Creeks

Yolo Bypass at Lisbon

Forecast to be above flood stage at 23.0 feet the afternoon of 02/22/17.
Potential Impacts: Kearney Ranch House floods. (Source: CalOES Daily Situation Report 2/22/17)



Observed • Forecast • Guidance • Monitor — Flood —
Created: 02/22/2017 at 7:05 PM PST (LSBC1 Forecast Run Time = 0303Z)
California Department of Water Resources
NOAA / NWS / California Nevada River Forecast Center

(Image Source: [California Nevada River Forecast Center River Data](#))

Sacramento River at Fremont Weir

Expected to meet or exceed flood monitoring stage. (Source: CalOES Daily Situation Report 2/22/17)

[River Data from California Nevada River Forecast Center](#)

Cache Creek at Yolo

Expected to meet or exceed flood monitoring stage. (Source: CalOES Daily Situation Report 2/22/17)

Yuba County

Road Closures

Check Road Closure Map Links in Critical Infrastructure section for current road closures

Rivers & Creeks

Yuba River at Marysville

Dropped below the flood monitoring stage 2/22/17. (Source: [California Nevada River Forecast Center 2/22/17 at 10:00pm](#))

Additional Resources

California Nevada River Forecast Center (CNRFC)

<http://www.cnrfc.noaa.gov>

California Department of Water Resources

<http://www.water.ca.gov>

About the California Resiliency Alliance

The California Resiliency Alliance is a 501c3 non-profit empowering local and regional resiliency effort through cross-sector information sharing and partnerships.

Visit our [website](#) to learn more about our initiatives and becoming a member.